



**Premier Building Products**  
Your trusted supply partner

## **Premier Building Products Standard and Water-Resistant Gypsum Board Product Range**

### **TECHNICAL MANUAL WITH DRAWINGS**

Feb 2023 V1.2

Office: 0800 773643

Mobile: 021 800 557

E: [steve.allison@premierbuildingproducts.co.nz](mailto:steve.allison@premierbuildingproducts.co.nz)

W: [www.premierbuildingproducts.co.nz](http://www.premierbuildingproducts.co.nz)

Address: 17 Gabador Pl, Mt Wellington, Auckland, 1644

Ver 1.2

## Table of Contents

<b>1.</b>	<b>GENERAL DESCRIPTION .....</b>	<b>3</b>
<b>2.</b>	<b>SCOPE OF USE &amp; LIMITATIONS .....</b>	<b>3</b>
2.1.	SCOPE OF USE .....	3
2.2	LIMITATIONS, STORAGE, HANDLING.....	3,4
<b>3.</b>	<b>COMPLIANCE WITH THE BUILDING CODE.....</b>	<b>4</b>
3.1.	NZBC COMPLIANCE .....	4
3.2.	B1 STRUCTURE .....	4
3.3.	B2 DURABILITY .....	4
3.4.	E2 EXTERNAL MOISTURE .....	4
3.5.	F2 HAZARDOUS BUILDING MATERIALS .....	4
<b>4.</b>	<b>MAINTENANCE AND WARRANTY.....</b>	<b>5</b>
4.1.	MAINTENANCE .....	5
4.2.	WARRANTY.....	5
<b>5.</b>	<b>TYPICAL CONSTRUCTION GUIDANCE.....</b>	<b>5</b>
5.1.	FRAMING & FRAME PROTECTION REQUIREMENTS.....	5
5.2.	CONSTRUCTION DESIGN GUIDANCE .....	5
5.2.1.	Installation Checklist:.....	5
5.3.	WATERPROOFING REQUIREMENTS .....	5
5.3.1.	Painting .....	5
5.4.	CONSTRUCTION DRAWINGS .....	5
5.5.	QUALITY MANAGEMENT .....	6
5.6.	BUILDING PRODUCT QUALITY PLAN .....	6
	<b>APPENDIX A – CONSTRUCTION DRAWINGS.....</b>	<b>7</b>

Version Control Number	Author	Date
Dr0.1	C Prouse	25 July 2022
Ver 1.0	C Prouse	01 Aug 2022
Ver 1.1	C Prouse	16 Nov 2022
Ver 1.2	C Prouse	24 Feb 2023

## 1. GENERAL DESCRIPTION

The Premier Building Products Ltd. (PBP) Standard and Water-Resistant Gypsum Boards are a range of products incorporating 10 mm, 13 mm thick sheets of gypsum board of various sizes used for general building and construction. The products are suited for residential housing, light commercial and commercial buildings.

This technical manual outlines typical installation details of the PBP Gypsum Board products. If specifiers require additional details or clarification, please contact PBP.

## 2. SCOPE OF USE & LIMITATIONS

### 2.1 SCOPE OF USE

The Premier Building Products (PBP) Standard and Water Resistant Gypsum Board range of products, incorporating 10 and 13 mm thick sheets of Standard and Water Resistant Gypsum board are intended to be used for general building and construction work and is suited for residential housing, light commercial and commercial buildings.

This technical manual outlines the typical installation and details of the PBP Standard and Water-Resistant Gypsum Boards. If specifiers require additional details or clarification, please contact PBP.

### 2.2 LIMITATIONS, STORAGE, HANDLING

PBP Standard and Water-Resistant Gypsum boards are required to be designed and installed, according to the details and drawings described in this technical and installation manual, by experienced and competent tradespeople

Handle with care, store the sheets off the ground and under cover.

When cutting, drilling, or sanding do so in an open-air environment or areas that are well ventilated and wear approved safety glasses and dust masks.

All aspects of cutting, drilling, or sanding must comply with the latest regulations of the Work Safe division of MBIE.

### 2.3 STORAGE

PBP Standard and Water-Resistant Gypsum Boards are supplied wrapped and stacked on pallets with support timbers at maximum 400mm centres and can be stored indefinitely when kept dry and out of the weather and safe from accidental damage.

### 2.4 SAFE HANDLING

Individual boards should be stacked and handled carefully to avoid damage. PBP gypsum boards should be lifted from the pallet by sliding board sideways and carrying on long edges.

## 2.5 SAFE WORKING PRACTICES

Safety is the responsibility of everyone! The following is to be used as a guide to safe work practices involving PBP Board. Under normal conditions of use, PBP board presents no known direct health hazard.

Construction sites can contain multiple hazards and therefore it is required that all installers follow all legal requirements when working on site. Please refer to the Ministry of Business, Innovation & Employment for OSH regulations for all relevant legislations.

For more information visit [www.employment.govt.nz/er/](http://www.employment.govt.nz/er/).

## 3. COMPLIANCE WITH THE BUILDING CODE

### 3.1. NZBC COMPLIANCE

Reliance is placed on AS/NZS 2908.2 for flat sheets.

PBP Standard and Water-Resistant Gypsum Boards comply with the following clauses of the New Zealand Building Code:

**B1** - Structure

**B2** - Durability

**E3** - Internal Moisture – for the water-resistant board only

**F2** - Hazardous Building Materials

### 3.2 B1 STRUCTURE

The 10 and 13 mm PBP Standard and Water Resistant Gypsum Boards, when installed as per this technical manual can withstand typical use when installed over timber framing as described in NZS 3604:2011.

### 3.3 B2 DURABILITY

PBP Standard and Water Resistant Gypsum Boards when installed as per this manual will meet the requirements of NZBC Clause B2.3.1 (b) of 15 years.

### 3.4 E3 INTERNAL MOISTURE

PBP Water Resistant Gypsum Boards contribute to the requirements of NZBC Clause E3.3.3, E3.3.4 and E3.3.5 relating to the resistance of the effects of splashed water.

### 3.5 F2 HAZARDOUS BUILDING MATERIALS

The PBP Standard and Water Resistant Gypsum Boards contain no hazardous material and therefore meet this requirement.

## 4. INSTALLATION OF CERAMIC TILES

4.1 Installation shall be as below:

Stud Centre (mm)	Fixing Centre (mm)	Board thickness (mm)	Maximum tile weight (Kg/m <sup>2</sup> )
600	150	10	26
600	150	13	40

## 5. USE AS A BRACING ELEMENT

5.1 All PBP bracing elements using the standard 10mm Gypsum Board with timber framing as per NZS3604 shall have fixing spacings at 50, 100, 150, 225, 300mm maximum from each corner and 150mm thereafter around the perimeter of the bracing element, with 300mm maximum spacing to intermediate stud or dwang.

5.2 Bracing elements with no HandiBrac® hold-down system, with bottom plate fixed as per NZS3604, can be used as a bracing element with the following bracing ratings:

Minimum length (m)	BU/m W	BU/m EQ
0.4	11.5	14.9
1.2	30.3	34.8

5.3 When the Gib HandiBrac® hold-down system is used in conjunction with 10mm PBP Standard Gypsum Board, it can be used as a bracing element with the following bracing ratings:

Minimum length (m)	BU/m W	BU/m EQ
1.2	75	64

### 6.1 MAINTENANCE

PBP Standard and Water-Resistant Gypsum Boards should be maintained in accordance with the designer's instructions.

### 6.2 SUPPLIERS WARRANTY –

The product must be designed, installed, and maintained as per the manufacturer's instructions for the warranty to be applicable.

## **7. TYPICAL CONSTRUCTION GUIDANCE**

### **7.1 FRAMING REQUIREMENTS**

The PBP Standard and Water Resistant Gypsum Sheets are intended for installation over either timber framing complying with NZS 3604, and/or Light Gauge steel framing complying with NASH standards 1 & 2, and/or concrete structures designed and constructed in accordance with NZS 3101,1&2

### **7.2 CONSTRUCTION DESIGN GUIDANCE**

#### **7.2.1 Installation Checklist:**

A pre- installation check should be carried out by the builder / LBP.

### **7.3 WATERPROOFING Requirements for water-resistant boards**

It is up to the designer to specify the waterproofing requirements.

### **7.4 CONSTRUCTION DRAWINGS**

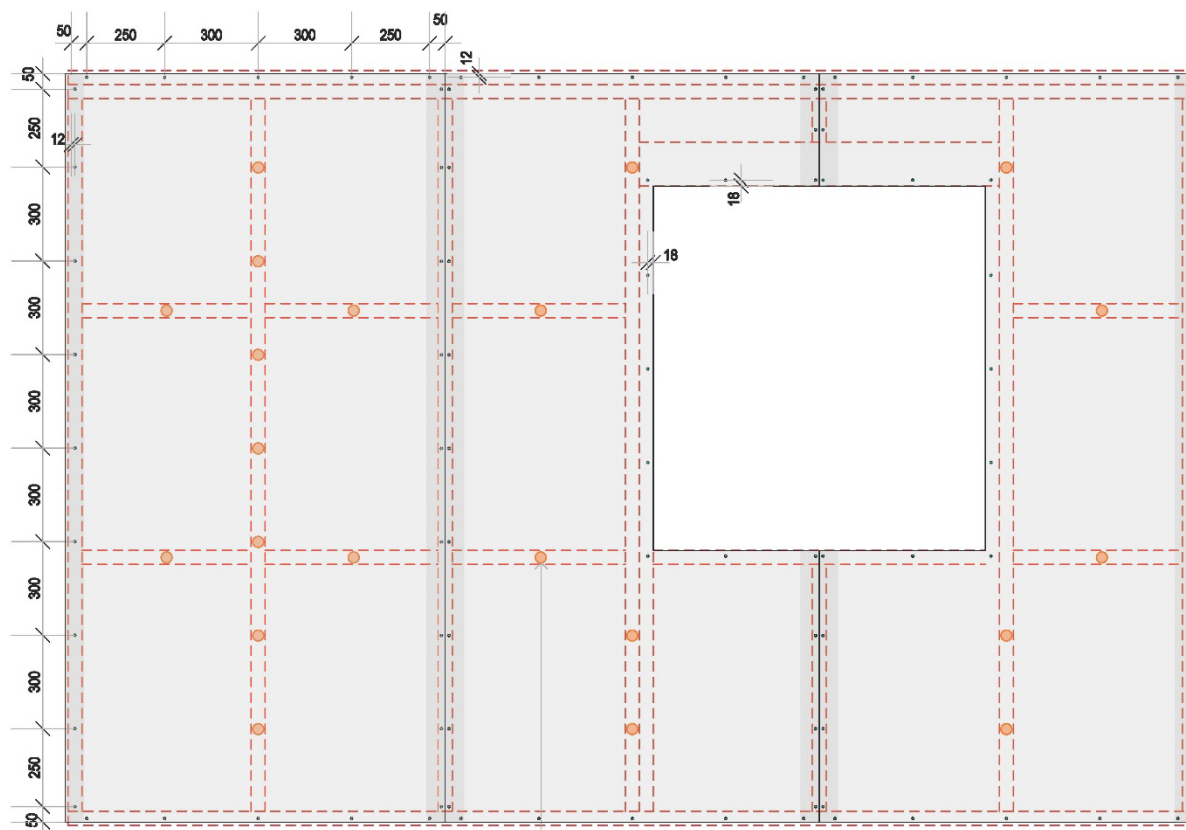
Typical construction drawings are listed in APPENDIX A.

## **8. QUALITY MANAGEMENT**

### **6.1 BUILDING PRODUCT QUALITY PLAN**

The quality of PBP Standard and Water Resistant Gypsum Board is managed through the use of a Product Quality Plan. The PBP Building Product Quality Plan v1.0 is a separate document and is available from Premier Building Products on request.

## APPENDIX A – TYPICAL CONSTRUCTION DRAWINGS



### Vertical Sheet Fixing - non braced wall

10mm sheet fixing - 25mm x 6g csk screws  
13mm sheet fixing - 32mm x 6g csk screws

Fasteners placed at:  
12mm from factory cut sheet edges.  
18mm from cut sheet edges.  
50mm from sheet corners,  
300mm crs to supported edges at top and bottom  
plates, studs,

Suitable adhesive used to intermediate studs at:  
300mm crs.

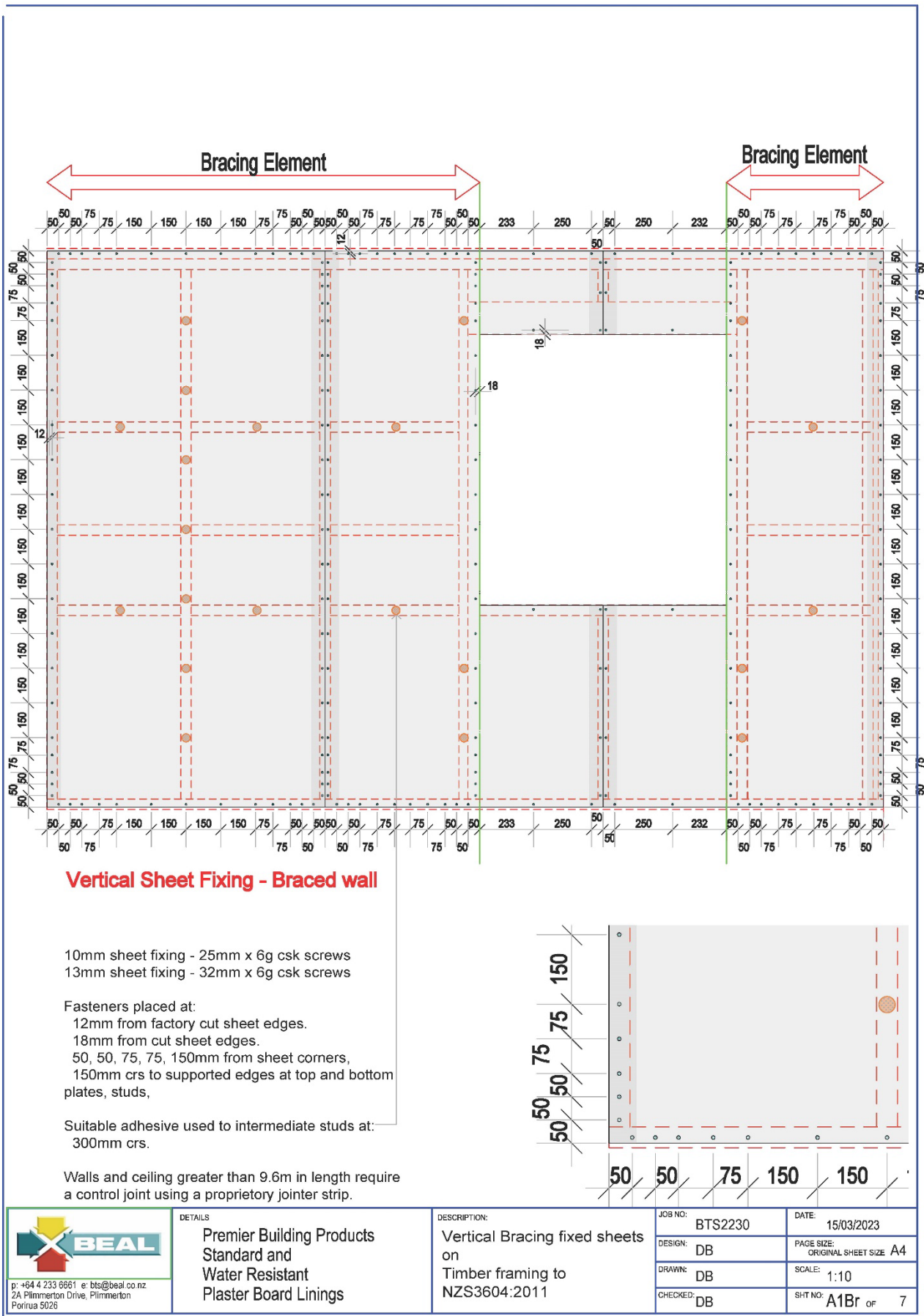
Walls and ceiling greater than 9.6m in length require  
a control joint using a proprietary jointer strip.



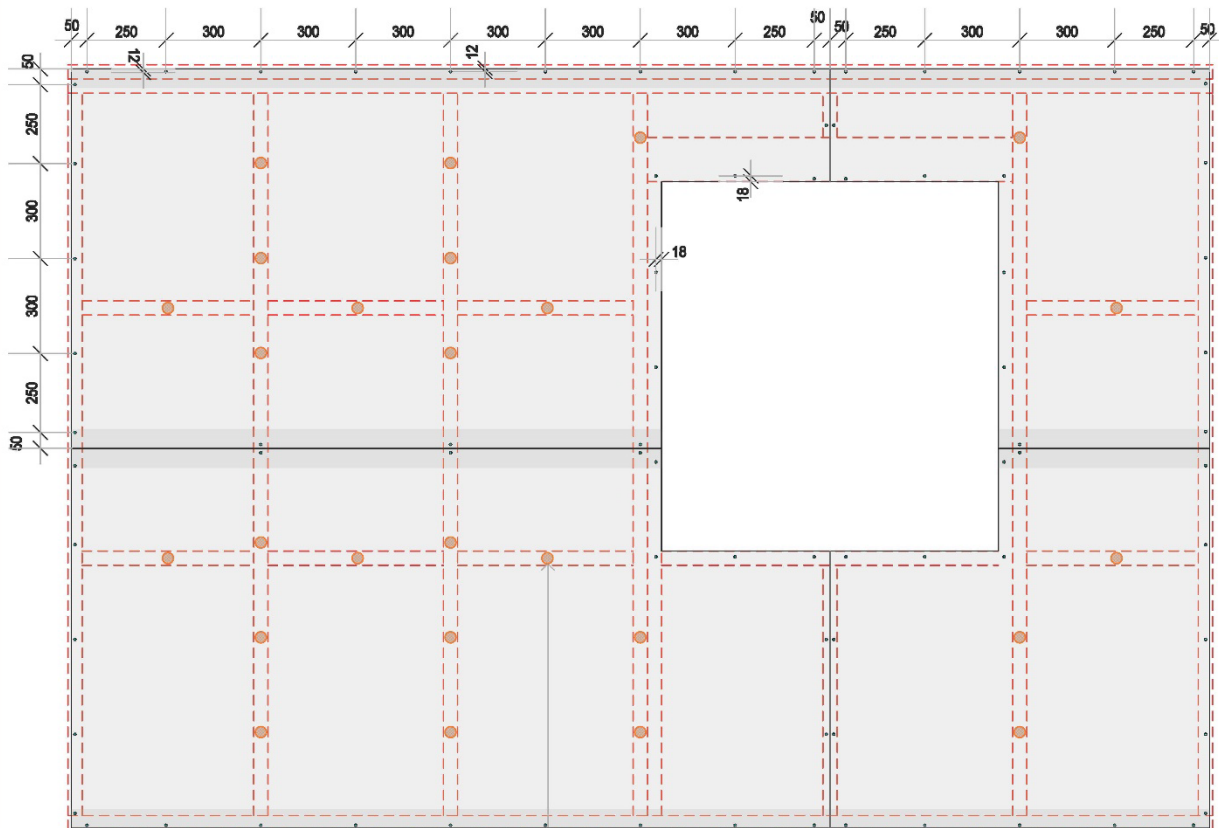
DETAILS  
Premier Building Products  
Standard and  
Water Resistant  
Plaster Board Linings

DESCRIPTION:  
Vertical fixed sheets on  
Timber framing to  
NZS3604:2011

JOB NO:	BTS2230	DATE:	15/03/2023
DESIGN:	DB	PAGE SIZE:	ORIGINAL SHEET SIZE A4
DRAWN:	DB	SCALE:	1:10
CHECKED:	DB	SHT NO:	A1 OF 7







### Horizontal Sheet Fixing - non braced wall

10mm sheet fixing - 25mm x 6g csk screws  
13mm sheet fixing - 32mm x 6g csk screws

Fasteners placed at:  
12mm from factory cut sheet edges.  
18mm from cut sheet edges.  
50mm from sheet corners,  
300mm crs to supported edges at top and bottom plates, studs,

Suitable adhesive used to intermediate studs at:  
300mm crs.

Butt joint to 2400mm sheet ends.

Walls and ceiling greater than 9.6m in length require a control joint using a proprietary jointer strip.



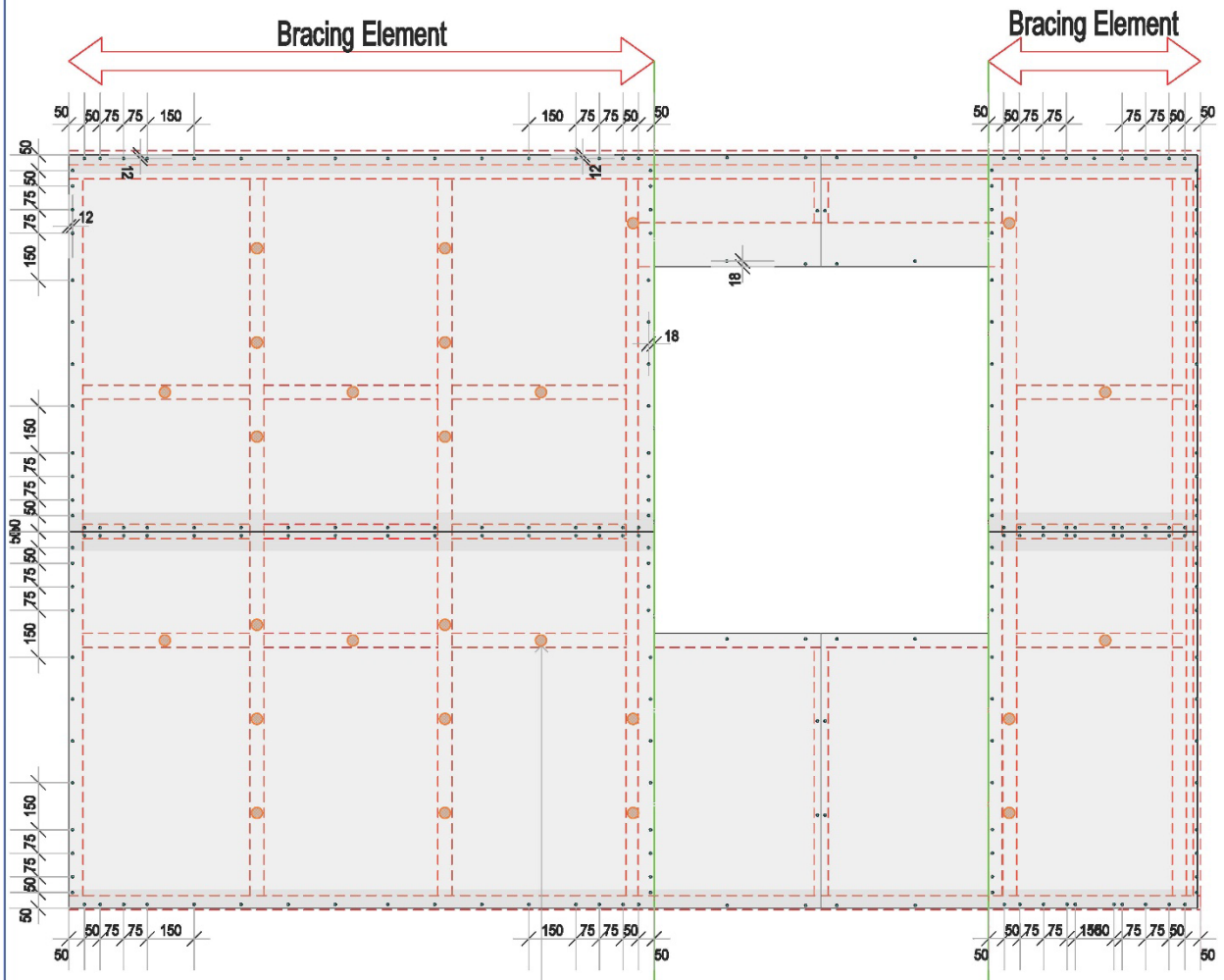
#### DETAILS

Premier Building Products  
Standard and  
Water Resistant  
Plaster Board Linings

#### DESCRIPTION:

Horizontal fixed sheets on  
Timber framing to  
NZS3604:2011

JOB NO:	BTS2230	DATE:	15/03/2023
DESIGN:	DB	PAGE SIZE:	ORIGINAL SHEET SIZE A4
DRAWN:	DB	SCALE:	1:10
CHECKED:	DB	SHT NO:	A2 of 7



### Horizontal Sheet Fixing - Braced wall

10mm sheet fixing - 25mm x 6g csk screws  
13mm sheet fixing - 32mm x 6g csk screws

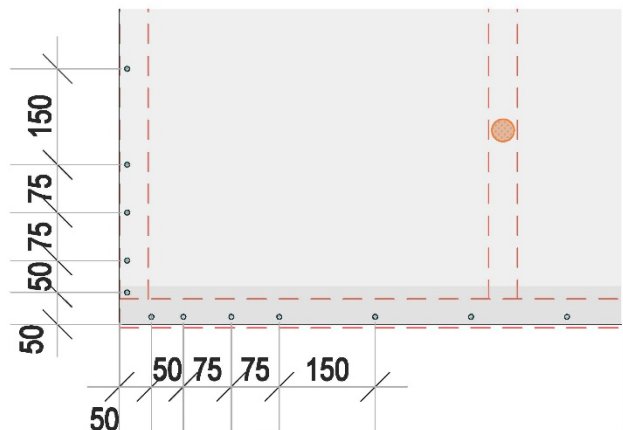
Fasteners placed at:

12mm from factory cut sheet edges.  
18mm from cut sheet edges.  
50mm from sheet corners,  
50, 50, 75, 75, 150mm from sheet corners,  
150mm crs to supported edges at top and bottom plates, studs,

Suitable adhesive used to intermediate studs at:  
300mm crs.

Butt joint to 2400mm sheet ends.

Walls and ceiling greater than 9.6m in length require a control joint using a proprietary jointer strip.



#### DETAILS

Premier Building Products  
Standard and  
Water Resistant  
Plaster Board Linings

#### DESCRIPTION:

Horizontal Braced fixed  
sheets on  
Timber framing to  
NZS3604:2011

JOB NO:	BTS2230	DATE:	15/03/2023
DESIGN:	DB	PAGE SIZE:	ORIGINAL SHEET SIZE A4
DRAWN:	DB	SCALE:	1:10
CHECKED:	DB	SHT NO:	A2Br of 7

Pipe penetration  
 Support on nogging within wall framing.  
 Water supply  
 10 or 13mm Premier Building Products Water  
 Resistant plaster board with  
 penetration holes cut 5mm oversize for  
 Neutral cure RTV sealant for full depth of lining.

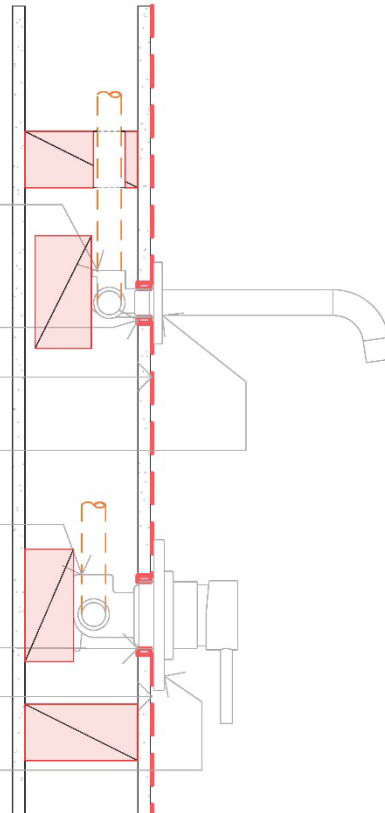
Waterproof lining, e.g. tiles over membrane, acrylic  
 sheet etc.

Plumbing fixture with wall flange.

Mixer  
 Support on nogging within wall framing.  
 Water supply  
 10 or 13mm Premier Building Products Water  
 Resistant plaster board with  
 penetration holes cut 5mm oversize for  
 Neutral cure RTV sealant for full depth of lining.

Waterproof lining, e.g. tiles over membrane, acrylic  
 sheet etc.

Plumbing fixture with wall flange.



## Pipe Penetration Details



DETAILS  
 Premier Building Products  
 Standard and  
 Water Resistant  
 Plaster Board Linings

DESCRIPTION:  
 Pipe Penetration Details

JOB NO:  
 BTS2230

DATE:  
 1/08/2022

DESIGN:  
 DB

PAGE SIZE:  
 ORIGINAL SHEET SIZE A4

DRAWN:  
 DB

SCALE:  
 1:5

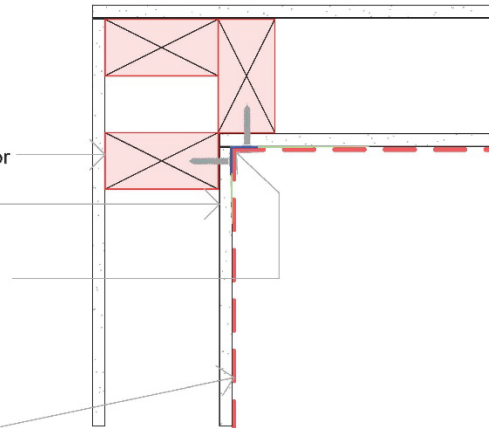
CHECKED:  
 DB

SHT NO: A3 OF 5

Wall framing to NZS3604:2011, refer to NZBC B2 for treatment requirements.  
10 or 13mm Premier Building Products Water Resistant plaster board.

Internal corner typically finished with paper faced jointing tape embedded into 3 coat interior plaster finishing system.  
Refer to plaster system manufacturers technical documentation for appropriate plaster systems.

Waterproof lining, e.g. tiles over membrane, acrylic sheet etc where required.

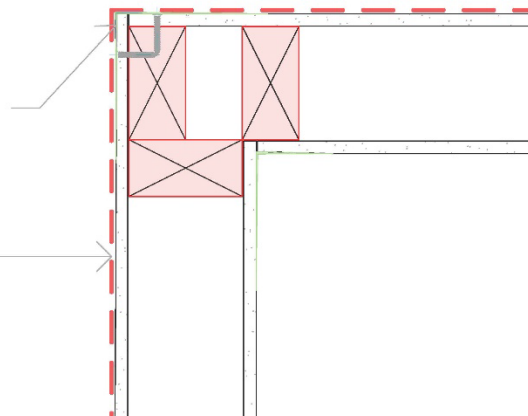


## Internal Corner Details

Wall framing to NZS3604:2011, refer to NZBC B2 for treatment requirements.  
10 or 13mm Premier Building Products Standard or Water Resistant plaster board.

External corner typically finished with paper faced jointing tape embedded into 3 coat interior plaster finishing system.  
Refer to plaster system manufacturers technical documentation for appropriate plaster systems.

Waterproof lining, e.g. tiles over membrane, acrylic sheet etc where required.



## External Corner Details



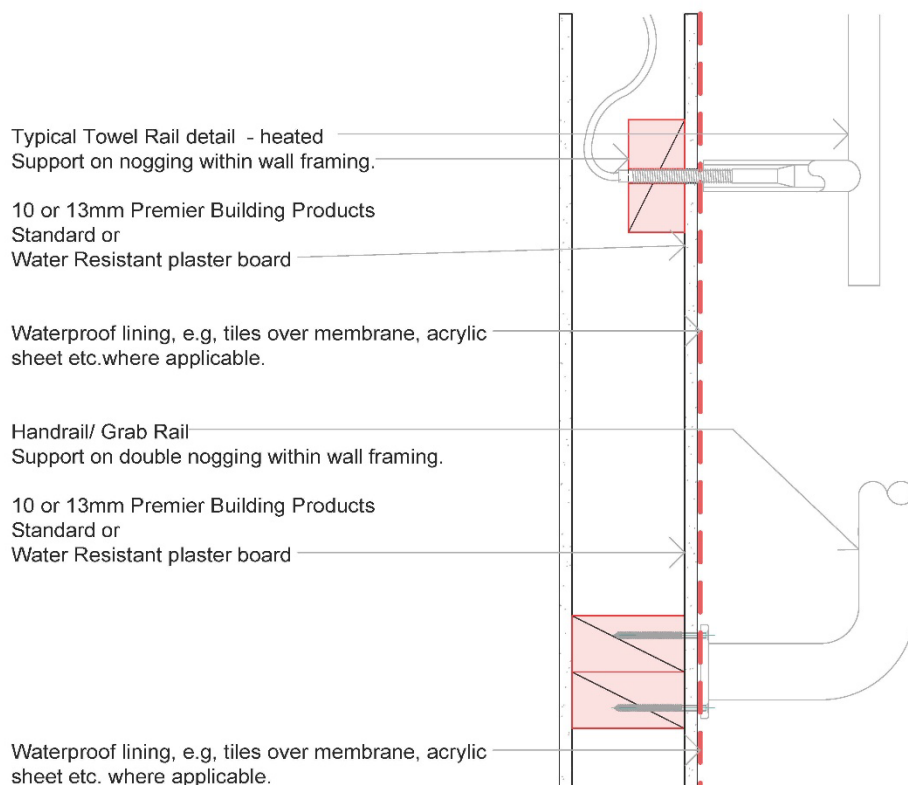
### DETAILS

Premier Building Products  
Standard and  
Water Resistant  
Plaster Board Linings

### DESCRIPTION:

Internal and  
External Corner Details

JOB NO:	BTS2230	DATE:	1/08/2022
DESIGN:	DB	PAGE SIZE:	ORIGINAL SHEET SIZE A4
DRAWN:	DB	SCALE:	1:10
CHECKED:	DB	SHT NO:	A4 OF 5



## Rail Penetration Details



### DETAILS

Premier Building Products  
Standard and  
Water Resistant  
Plaster Board Linings

### DESCRIPTION:

Heated Towel Rail and  
Handrail Details

JOB NO: BTS2230

DATE: 1/08/2022

DESIGN: DB

PAGE SIZE:  
ORIGINAL SHEET SIZE A4

DRAWN: DB

SCALE: 1:100

CHECKED: DB

SHT NO: A5 of 5